

# Project Summary Report



About us	02
MWF World Map	03
Orphan Care Homes	05
Our Girls Our Future	07
Educare	09
Orphan Care Complex	11
Raise a Family	13
Water for All	15
Healthcare	17
Qurbani	19
Emergency Relief	21
HelpFeed Million Meals	23
Volunteering and Fundraising	25
Local Projects	27
Dates for a Cause	29
Ways to donate	31

# CONTENTS

# ABOUT US

Minhaj Welfare Foundation was founded in 1989 as a compassionate response to the rise of inequality and poverty in Pakistan. Since then it has been serving and striving to make the world a better and fairer place.

One of the key and foremost reasons for the establishment of Minhaj Welfare Foundation was to establish a network of schools that will provide a quality education which would be accessible to the economically deprived communities of Pakistan.

MWF strongly believes that education is the most crucial foundation stone of any society; without which the development and progress of any nation is not achievable.

Since our establishment, we have built 640 educational institutions including schools, colleges, libraries and a University catering more than 150,000 students and through this we are contributing to the livelihoods of over thousands of families through the employment of our academic and administrative staff.

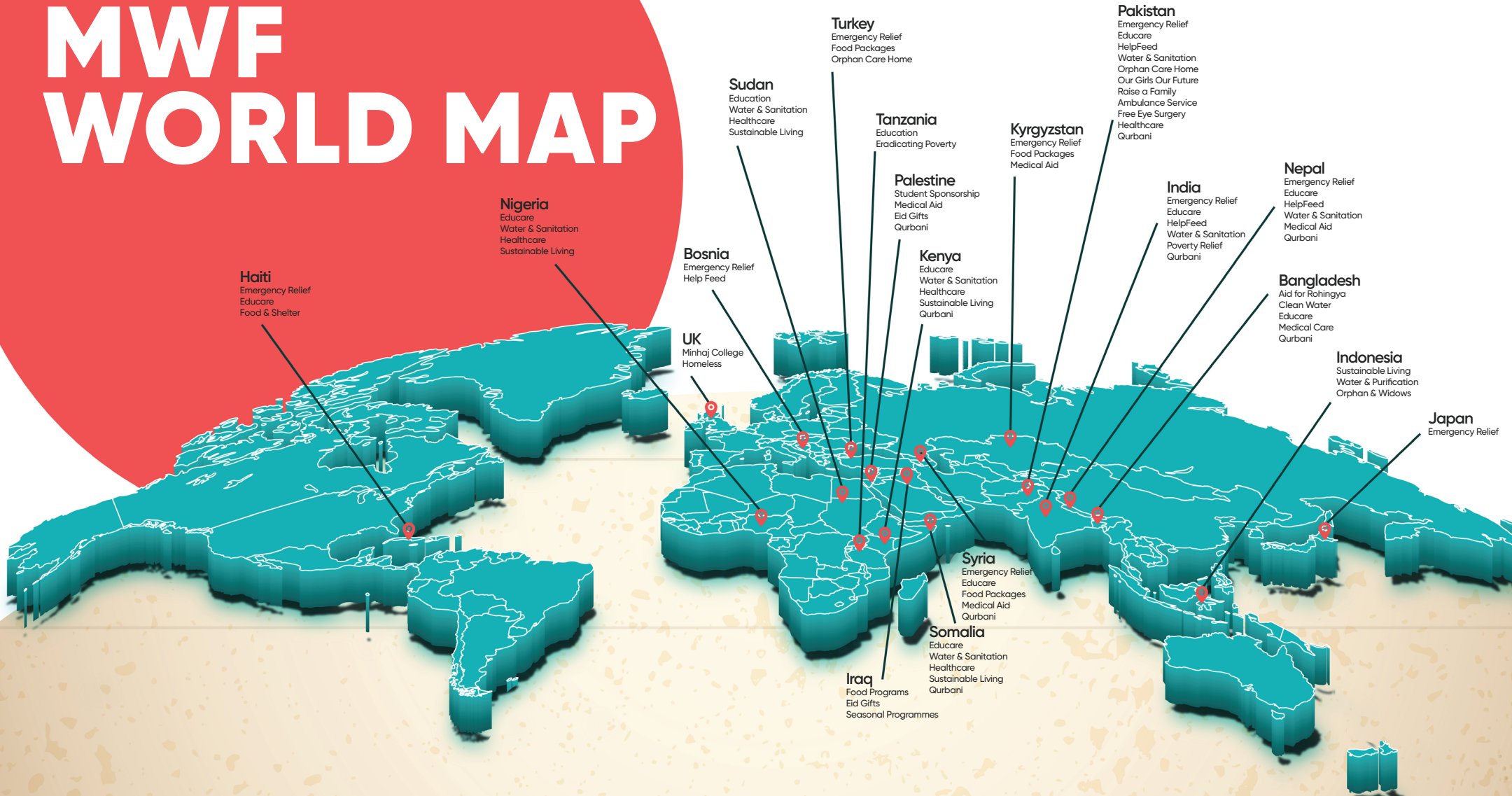
MWF strongly adheres to the philosophy that education should be supplemented with rigorous moral and ethical training so that the students make a positive contribution to the development of their communities.

Inspired by our faith and guided by our values, we envisage a peaceful world where communities are empowered, social obligations are fulfilled and people respond to the needs and suffering of others.

Minhaj Welfare Foundation takes the principle view that there is no greater priority in life than to lift the poor out of poverty.



# MWF WORLD MAP





# ORPHAN CARE HOMES



Supporting  
**THOUSANDS OF ORPHAN**  
and needy children providing

The Orphan Care Home provides each child with their basic (food, water and shelter), developmental (school, medical care, vocational training, and life-skills), and their emotional needs (the opportunity to be a part of a family again, to work through the grief of losing their parents in a secure and caring environment).



Accommodation



Healthcare



Education



Entertainment



Daily Meals



Sports

The AGHOSH (Orphan Care Home) project builds a loving, stable family for orphaned, abandoned and vulnerable children around the world.

Our comprehensive approach provides long-term care for children in need and empowers them with the resources to reach their full potential; transforming the lives of thousands of children each year.

Through AGHOSH FAMILY, smaller children (from 5 years) are raised by a MOTHER who cares for the children as her very own. Each Aghosh family consists of about 8 children (and their Aghosh mom) who grow up together as siblings.





# OUR Girls OUR Future

ہماری بیٹیاں ہمارا مستقبل

In developing countries, millions of girls are denied the chance to develop skills that will help them take charge in their homes, careers, communities and countries.

Minhaj Welfare Foundation builds an environment with safe, quality and transformative education for girls so they may find their voice and learn to lead.

Through the "Our Girls Our Future" initiative, MWF is directly supporting thousands of girls to get the education they need to transform their lives and secure their futures. This means working to ensure quality and safe education for all girls, including in remote and marginalised areas.

MWF has built girl-only schools and colleges, and orphan care homes in which young girls are now able to access quality education, boarding facilities, and vocational training centres.





# EDUCATION FOR ALL

In 1995, Minhaj Welfare Foundation launched its 'Mass Education Programme' targeting communities from remote and marginalised areas of Pakistan. Through its inception, MWF was driven by the notion that education is for all and the only means which can lift communities out of extreme poverty is education.



Through a community led model, MWF opened its very first school in the drawing room of a home belonging to a local volunteer in Pakistan. MWF has built 640 educational institutes (including primary and secondary schools) in Asia and Africa alone.



# 640

## EDUCATIONAL INSTITUTES

150,000 Students



8000 Teachers

Through **Minhaj Education Society**, MWF is



to build bigger and modern classrooms providing quality education



to provide scholarships to students to advance in their studies



to ensure every child receives the best form of both secular and religious education



# MINHAJ ORPHAN CARE COMPLEX

A much more enhanced, developed and enlarged version of the current Aghosh Orphan and Needy Project which has been serving since 2005.

Minhaj Orphan Care complex will be more than just a safe environment for orphan and needy children; it will be dedicated to providing children access to high-quality care and excellent facilities.

Every child will get the best opportunity in education, life-skills, and personality development through outstanding child management and safeguarding policies. We aim to ensure they have the best chance at attaining a bright future for themselves.



Complete Project (500 Units)

## Admin & Recreation

It will also serve as a management hub for all the different complexes. This complex will include a mosque, management offices, Security & CCTV monitoring centre, Auditorium, Indoor Sports Hall, Industrial Kitchen, Warehousing and Distribution Centre Facilities.

## Educational Complex

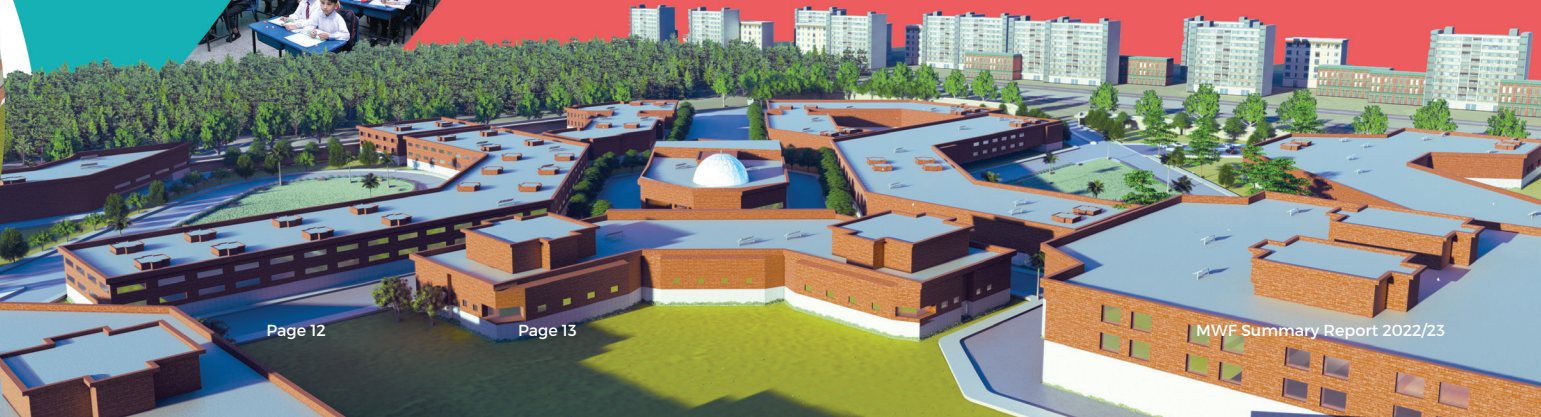
100 classrooms and nursery facilities are equally distributed in two complexes for boys and girls each. The educational facilities will serve academic as well as recreational needs of over 2000 children, from the age of nursery up to high school.

## Sustainability

Pakistan is an agronomic zone country. To develop sustainability initiatives for the residents and users of the complex, we aim to dedicate acreage to harvesting crops and the development of a livestock farming centre. Providing local communities growth opportunities as well as providing the complexes with a self-administered sustainable means of resources.

## Boarding Complex

100 apartments are equally distributed between two complexes for boys and girls each. Boarding facilities will incorporate all the accommodation needs of a normal family unit within each apartment. Additional shared social spaces like Gym, dining halls, outdoor lawns will also be included.





# RAISE A FAMILY

BUSINESS START-UP



MICRO FINANCING



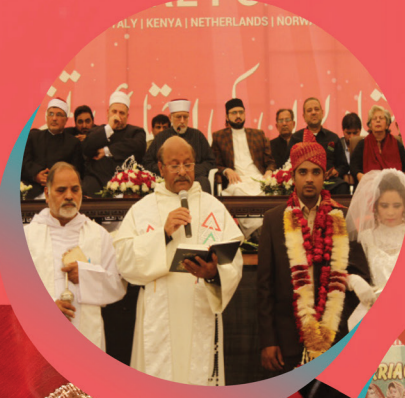
MARRIAGE SUPPORT



VOCATIONAL TRAINING



HOUSING SUPPORT



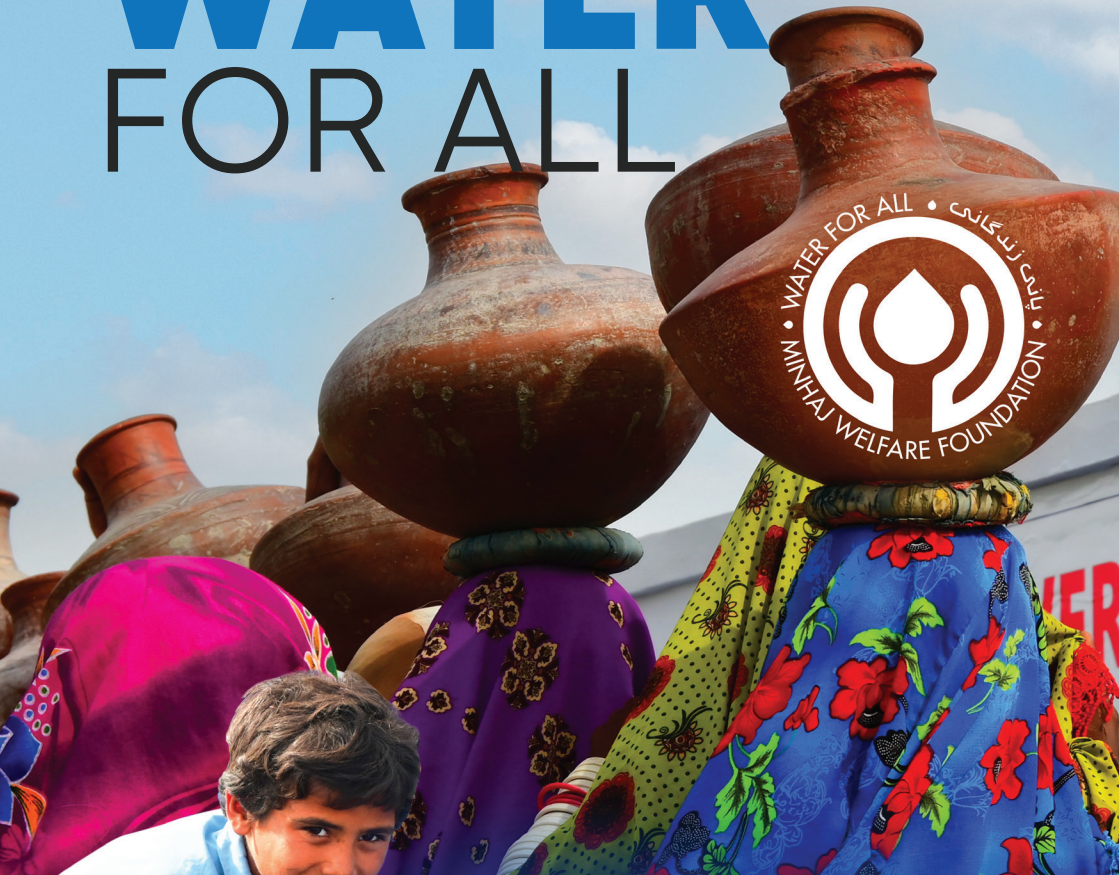
**STABLE FAMILY  
SECURE FUTURE**  
FAMILY START-UP SUPPORT

**خاندانی  
کفالت**

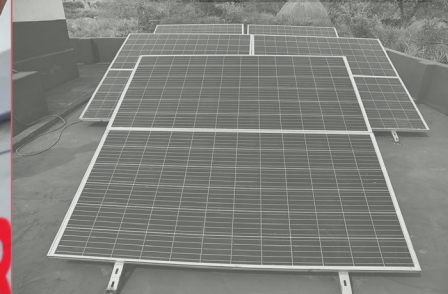
As part of its 'stable family, secure future' - family start up support programme - Minhaj Welfare Foundation provides newly married couples (that come from deprived backgrounds) and their families with an amazing 'gift of marriage' by ensuring both the man and wife are better equipped to take part in the development of their society and help to restore their self-esteem.



# WATER FOR ALL



In the deserts of Thar, accessing clean and safe drinking water is one of the biggest challenges faced by communities. Similarly, there are communities in the North Eastern region of Kenya affected by contaminated salty water from the nearby river. Thanks to our donors worldwide, we have been working with communities to install fresh safe water facilities in the poorest regions around the world.



Saabra (pictured on the right) said, "Thanks to Minhaj, we now have safe and clean drinking water."

"I can't believe there will be no more worries about my family getting sick with cholera or the water running out."

Saabra's family now has free access to enough clean water for drinking, cooking, and self-hygiene. Instead of walking 4 kilometres every day to fetch water, Saabra can now attend school and look forward to a brighter future.



MWF has built more than **10,000** Water Facilities

Providing more than **1 MILLION** people with access to clean and safe drinking water



# HEALTHCARE

“ Minhaj Welfare Foundation believes that healthcare is a universal right for everyone. ”



We believe that families should not suffer needlessly because they lack access to health services. Today many people are unable to access health services because of poverty, their rural locations, or marginalisation.



Minhaj Welfare Foundation through its dedicated team of doctors and trained medical experts provides access to basic health care to the poor and needy around the world.

MWF has established free medical camps (providing free blood check-ups, free medical advice, etc.), small dispensaries, ambulance services and mobile surgeries.

MWF setup free eye camps in which trained surgeons carry out cataract surgery on thousands of patients.

Through our intervention we have Prevented many mothers from losing their babies during birth, saved young children from diseases such as malaria, diarrhoea and from other water borne diseases, saved thousands of lives every year.





# QUR BAA NI



One of the most important aspects of faith is to help feed the poor and the hungry. This is why every year, MWF joins the world's largest 'helpfeed' campaign to provide food security to communities in need. Qurbani is one of the many humanitarian steps taken by MWF in alleviating poverty in the developing world.

Since 1989, more than 278,923 Qurbanis and 1,532,287 Qurbani meat packs have been distributed by Minhaj Welfare Foundation in the most poorest regions of the world reaching 5 million beneficiaries.

Minhaj Welfare Foundation's seasonal Qurbani campaign is carried out in Syria, Palestine, Kenya, Somalia, Nepal & Bangladesh (Rohingya refugees), India and Pakistan.

## 01 EAST Africa

The Qurbani programme is implemented in the North East region of Sub-Baomo location in Kenya (bordering Somalia). In Somalia our teams help to distribute Qurbani meat in IDP camps in Mogadishu and southern regions of the country.

## 02 SOUTH ASIA

Our experienced team travels to rural areas of Pakistan and India. With a largest network of volunteers, we reach hundreds of thousands of households across the region ensuring that they too can share the joys of Eid.

In Nepal and Bangladesh, we are working in hard-to-reach areas affected by natural disasters. Our focus is mainly on the Rohingya refugees who have fled their homes in Myanmar. We are providing Qurbani meat in make-shift homes and camps set up for the Rohingya refugees. MWF has a long term commitment to help the Rohingya people.

## 03 MIDDLE EAST

The Syrian and Palestinian people have been facing severe persecution, leaving millions homeless and without basic essentials. The ongoing conflict has taken thousands of lives. Through our local teams, MWF reaches out to both Syrian and Palestinian refugees living on the Turkey and Jordan border.





# EMERGENCY RELIEF

Millions of people have been affected by heavy rainfall, flash floods and landslides since July, as Pakistan endured more than 80% of its normal total monsoon rainfall in three weeks. Overall, the country sees its eighth cycle of monsoon rains. Thousands are without food and shelter in Baluchistan, Khyber Pakhtunkhwa and Sindh provinces, which have been most affected by this humanitarian disaster.

Minhaj Welfare Foundation has expanded its relief work in the flood-hit areas of Pakistan by rebuilding homes and livelihoods for displaced families. An estimated two million houses were completely damaged. As water showed signs of receding in many areas of southern Punjab and Sindh, families started returning to their homes.

MWF is significantly scaling up its response in Pakistan to ensure long-term support for 1 million people affected by the devastating impact of unprecedented floods on infrastructure, food security, and livelihoods. We are planning to rebuild homes for flood-affected families and rehabilitate clean water supply and sanitation facilities.

From the communities living in Gilgit Baltistan's remote mountains to the flooded farmlands of south Punjab, our teams have been committed to delivering your aid to displaced families.







# HELPFEED MILLION MEALS

As the world faces economic deficit, and the widespread and longevity of Covid19 penetrating many lives, more people than ever need lifesaving food assistance. With the rate of hunger globally increasing, Minhaj Welfare Foundation has launched HelpFeed 1 Million Meals to meet this growing need.

HelpFeed 1 Million Meals is an initiative of Minhaj Welfare Foundation's 2021 campaign - the world's largest campaign to End Global Hunger. Every year, MWF reaches those in need with food assistance in Asia, Africa and the Middle East. This Ramadan, we aim to HelpFeed 1 Million Meals to those severely affected by extreme poverty; through our community kitchens, we will be providing Sahoor and Iftar Meals and distribute Ramadan Food parcels around the world.

Poverty is one of the major causes of hunger. This includes lack of resources and unequal distribution of wealth for the poor and needy, global conflicts and pandemics.





# VOLUNTEERING & FUNDRAISING

Minhaj Welfare Foundation is built upon the hard work and dedication of volunteers.

Being a part of Minhaj Welfare Foundation is a great way to meet like-minded people in your community, and to make a huge difference to the lives of women and children living in poverty. At MWF, we provide an opportunity to our volunteers from all ages, backgrounds and interests, who love organising fundraising events and activities in their local area. All for a good cause.

MWF believes volunteering can create a positive impact for the individual. As such, we are committed to investing in and supporting MWF volunteers.

Ways to volunteer with MWF

- ▣ Organise an event
- ▣ Participate in a challenge
- ▣ Volunteer at an event
- ▣ Distribute campaign material
- ▣ Hold a market stall
- ▣ Engage your neighbourhood
- ▣ Participate in deployment trips
- ▣ Bucket collections
- ▣ Build a network of money boxes
- ▣ Create your crowd funding page





## 01 SEMINARS

Minhaj Welfare Foundation develops workshops and courses to deliver in seminars that educate students towards becoming constructively contributing participants of their society. These seminars are both practical and interactive.

## 02 MINHAJ COLLEGE MANCHESTER

Minhaj College Manchester (MCM) is a full-time independent college providing high-quality education in various academic disciplines (i.e. A-Levels) alongside accredited courses in Islamic studies. MCM takes pride in providing a holistic environment for all students offering personal, spiritual and academic learning, thus making its pastoral care system a central part of daily activities.

## 03 RESEARCH & PUBLICATION

A dedicated department is engaged in research and translation work in different languages. The works produced by this department is in the form of books, courses and syllabi which is then used by educational institutions, seminaries, schools and universities as a vital reference and guide.

## 04 HOMELESS

According to reports there is now a growing number of people sleeping on the streets. MWF works with local groups and partners to provide hot meals at soup kitchens and ready packed meals to homeless people locally. MWF is committed in appealing for charitable donations to support local projects in the UK.

## 05 AWARENESS

Minhaj Welfare Foundation awareness campaigns challenge public opinion in ways that have a positive impact on lives. Our awareness campaigns take place through local community engagement initiatives and include a variety of methods like media campaigns (radio and tv), social media content, workshops and debates.

## 06 COMMUNITY RADIO

Community Radios have proven to be an excellent engagement platform. These initiatives provide community leaders and campaigners a louder voice as well as an array of activities for people of all ages to engage in. Our radio stations provide an inclusive opportunity for the community to play their active role in saving lives.



# LOCAL PROJECTS





# Dates for a CAUSE

Palestinian

Medina

**MEDJOUL  
DATES**

**AJWA  
DATES**



The king of dates! Medjoul dates are plump and full of honey and caramel flavors.

Ingredients: Whole medjoul dates without seeds (contains fruit piece)

### INSTRUCTIONS

- Share these delicious Palestinian dates with family and friends
- Use the can to store change
- Donate your fundraiser to make a difference in Palestine

**100% PROFITS TO CHARITY**

*Since 1989*



We thank our supporters for their growing trust in our organization: sharing peace, love and harmony with the less fortunate worldwide, regardless of race, religion, language or sect.

### BANK TRANSFER

Bank: Wells Fargo

Account Name: Minhaj Welfare Foundation USA INC. Account Number.: 699 4343 181

Direct Deposit (RTN): 1221 052 78 Wire Transfer (RTN) : 1210 002 48

### TELEPHONE DONATIONS

To make a donation over the phone using your debit/credit card, please call us directly on:

1-888-9-646425 (US/CA)

### CHEQUES BY POST

Please make cheques payable to MWF and post to

Minhaj Welfare Foundation  
280 Madison Ave, 9th Floor,  
Rm 912, New York, NY 10016

### ONLINE DONATIONS

Visit our website  
mwfusa.org

Minhaj Welfare Foundation USA is a 501 (c)(3) registered non-profit Organization (Tax ID# 81-5486331)







 **Minhaj**  
Welfare Foundation  
[WWW.MWFUSA.ORG](http://WWW.MWFUSA.ORG)

**SOLAR POWERED WATER WELL**  
donor name  
Haji Cyrus King Awan  
Project Code: W67  
Location: THAR, PAKISTAN

 **Minhaj**  
Welfare Foundation  
**MINHAJWELFARE.ORG**

